



Supplemental Security Income application

What is SSI?

Supplemental Security Income (SSI) provides financial assistance to individuals who are disabled, elderly, or blind and have limited income and resources. It is especially helpful for young adults with disabilities aged 18 and over as they begin to live independently. Eligibility for SSI requires that the disability significantly impacts work and/or Activities of Daily Living (ADLs).

Are you or your young adult eligible for SSI?

- Must be disabled (by Social Security Administration [SSA] criteria), blind, or age 65 or older
- Must have **limited income and resources**
- Must be a U.S. citizen or qualified non-citizen
- Must reside in one of the U.S. 50 states, the District of Columbia, or the Northern Mariana Islands

Gather your information

- Social Security number
- Medical records (if disabled)
- Proof of age (usually a birth certificate)
- Proof of income, if relevant (pay stubs, tax returns)
- Proof of resources (bank statements, property deeds if relevant)
- Living arrangement information (rent, lease, utility bills if relevant)
- Names, addresses, and telephone numbers of doctors, hospitals, and clinics seen in the past three to four years
- Copy of current Individualized Education Program (IEP) (if relevant)
- Keep copies of all your documents and contacts with the SSA. A designated file will be helpful as the process moves forward.

©2024 PACER Center, Inc.

8161 Normandale Blvd., Minneapolis, MN 55437 | (952) 838-9000 | (800) 537-2237
pacer@pacer.org | pacer.org

PACER Center is not a legal services agency and does not provide legal advice or legal representation. The content of this resource is for informational and educational purposes only, and is not legal advice, and should not be used as a substitute for legal advice.

How to apply for SSI

- Online application
 - ◊ Begin the online process:
[Online Application](#)
 - ◊ Apply by phone: 1 (800) 772-1213
- Visit your local SSA office to apply in person. It is best to make an appointment. Find your local office at the [Local Office Directory](#).

What happens next?

- The SSA will review your application and if the limited [income](#) and [resource](#) criteria are met, they will send the application to Disability Determination Services (DDS) for medical review.
- If more information is needed, the SSA may request that you complete an [Activities of Daily Living Report](#) (ADL).
- A consultation with a medical doctor may be arranged, or additional information may be requested. Respond as quickly as possible to any request.

If your application is denied

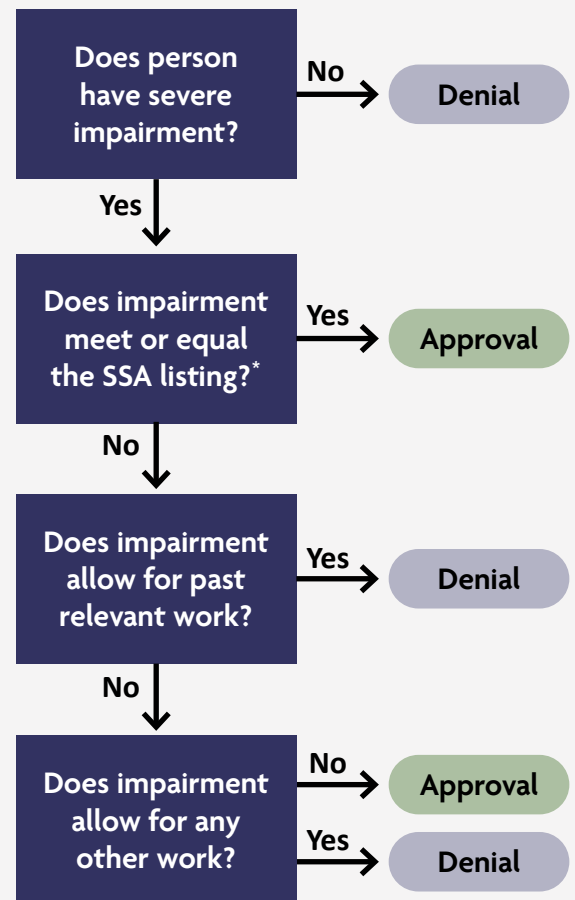
- You have the right to appeal if your application is denied.
- File an appeal within 60 days of receiving the denial notice.
- Follow the [SSA's appeal](#) process.
 - 1) Reconsideration, 2) Hearing, 3) Appeals Council Review, and 4) Federal District Court (rarely utilized).

Helpful resources

- [PACER website](#)
- [SSA website](#)
- [SSI/SSDI Outreach, Access, and Recovery \(SOAR\)](#)
- [Centers for Independent Living MACIL](#)
- [MN Disability Hub](#)

Contact your local SSA office for assistance at 1 (800) 772-1213.

The medical review process



- Processing time can vary and may take six months or longer.
- You will receive a written notice of the SSA's decision with the name and phone number of the medical doctor making the decision.
- The medical doctor may be consulted for more information on the decision if needed.

*SSA disability criteria listing: [SSA Blue Book Disability Criteria](#)