



Ensuring people
with disabilities live
their best life.



MINNESOTA

OLMSTEAD

IMPLEMENTATION OFFICE

The Olmstead Plan

In 1999, the Supreme Court issued the “Olmstead Decision.” It basically says that if a person with a disability chooses to live in the community, a state must do what it can to try and make this happen.

The Olmstead Plan is more than a government document. Adopted in 2015, Minnesota’s Olmstead Plan is a detailed roadmap with concrete and measurable goals that must be achieved by the State in order for people with disabilities to have the opportunity to live, learn, work, and enjoy life in the communities they choose.

The catalyst for Minnesota’s Olmstead Plan was the settlement of a class action lawsuit in the U.S. District Court in a case called *Jensen v. DHS*. Jensen involved people with disabilities who had been residents of a Department of Human Services (DHS) facility.



OUR VISION:

People with disabilities are living, learning, working, and enjoying life in the most integrated setting.

“The most important thing is allowing people to live their independent lifestyles: working, going to school, living everyday life on their own terms. A disability does not and must not mean second class citizen. The Olmstead decision is a leap forward for America.”

–A Minnesotan with a disability

WHO WE ARE & WHAT WE DO.

The Olmstead Implementation Office works to ensure Minnesotans with disabilities are heard and the promise of the Olmstead Plan is delivered.

The Olmstead Implementation Office has a dual role:

- 1** To provide oversight to ensure compliance with the Olmstead Plan and work with state agencies to evaluate Plan implementation.
- 2** To engage with the community, especially people with disabilities, to make sure they are being heard by state agencies. The Olmstead Implementation Office ensures the community is heard in the following ways:

Community Engagement

In addition to listening directly to people with disabilities and seeking their input, the Olmstead Implementation Office also relies on the Community Engagement Workgroup to advise the office on how to best communicate and engage with people with disabilities.

Quality of Life Survey

The survey is the first longitudinal study in the country that includes people with disabilities of all types, and ages in segregated settings, or at risk of being placed in segregated settings. The goal is to see if the quality of life of Minnesotans with disabilities improves as the Olmstead Plan is implemented.

Dispute Referral

From time to time, help is needed to resolve disputes. Depending on the issue, the Olmstead Implementation Office will refer people to the most appropriate state agency. All referrals and agency responses are monitored for timeliness and responsiveness.

To learn more, go to www.mn.gov/olmstead

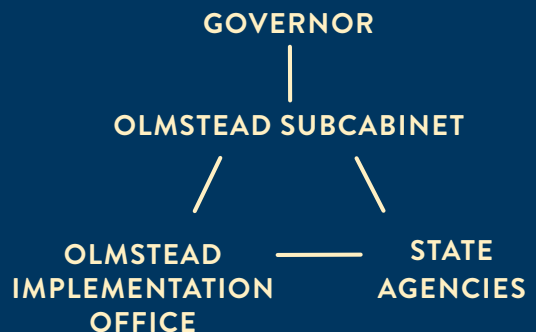


The role of the Subcabinet

The Minnesota Olmstead Subcabinet is the decision-making group that is responsible for and oversees implementation of the Minnesota Olmstead Plan. The Governor appointed the leadership at the following agencies and entities to serve on the Subcabinet:

- Department of Corrections
- Department of Education
- Department of Employment and Economic Development
- Department of Health
- Department of Human Rights
- Department of Public Safety
- Department of Human Services
- Department of Transportation
- Department of Veterans Affairs
- Metropolitan Council
- Minnesota Housing Finance Agency
- Office of the Ombudsman for Mental Health and Developmental Disabilities
- Governor's Council on Developmental Disabilities

The diagram shows how the Governor, Olmstead Subcabinet, State agencies, and the Olmstead Implementation Office work together to implement the Olmstead Plan.



Stay engaged.

Get involved.

Visit us at
www.mn.gov/olmstead

Like us on Facebook
www.facebook.com/MNOlmsteadPlan

Contact us.

651.296.8081
mnolmsteadplan@state.mn.us



MINNESOTA

**OLMSTEAD
IMPLEMENTATION OFFICE**

400 Wabasha St N, Suite 400
St Paul, MN 55102

To request alternative formats
of this document, send an email to
mnolmsteadplan@state.mn.us
or call 651.296.8081.